

Meeting Venue

Starting with our meeting in January we will be meeting at the paranapple centre, Devonport.

Meeting times are 7.30pm to 9.30pm. All members are requested to be in attendance prior to the start of the meeting as the door locks when unattended. The door will be opened from 7.15pm and closed at 7.25pm to allow the meeting to start on time.

If you are late then ring Stan on 0409 525 492.

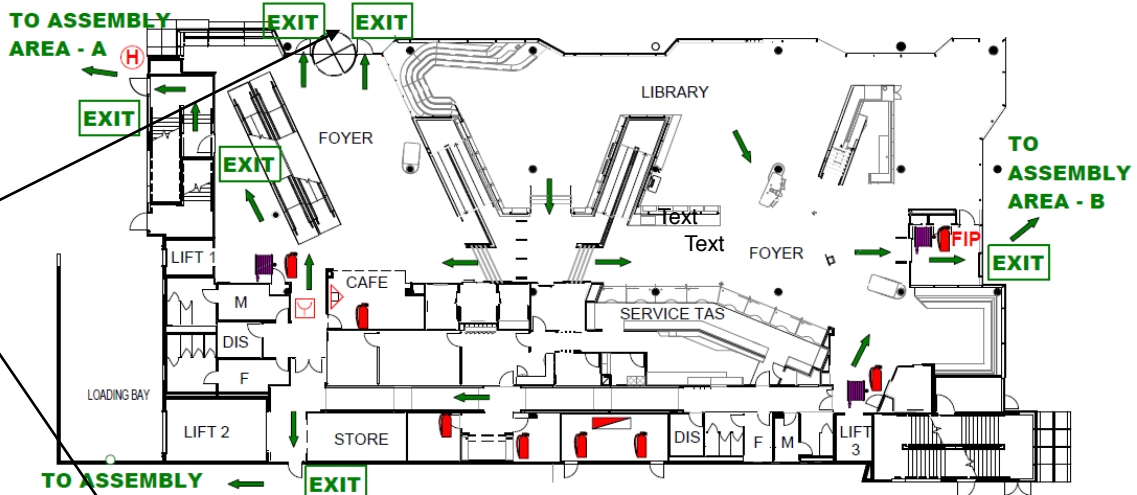
Entry to the paranapple convention centre is via Market Square, the central pedestrian square located off Rooke street and in the heart of the paranapple precinct.

Market Square is adjacent to the multi-level carpark, accessible from Best Street and Fenton Way.

The map below shows the entrance between the two EXIT signs either side of the revolving door. Then take LIFT 1 to the first floor. The meeting is in the Quoiba Room directly above the entrance way.

Although hard to read the small map bottom left in the diagram below shows the entrance via market square.

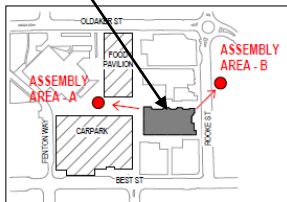
EMERGENCY/EVACUATION PLAN - GROUND FLOOR



TO ASSEMBLY AREA - A

TO ASSEMBLY AREA - B

TO ASSEMBLY AREA - A



EVACUATION ASSEMBLY AREA PLAN

EMERGENCY ACTION GUIDE IN CASE OF EMERGENCY

ALARM
Alert others and dial '000'

EVACUATE

- Use nearest emergency exit
- Take others with you
- Proceed to assembly area as shown
- Do not use the Lift

DO NOT RE-ENTER BUILDING UNTIL TOLD TO DO SO.

LEGEND:

- WAY OUT
- EXTINGUISHER
- FIRE HOSE REEL
- FIRE INDICATOR PANEL
- HYDRANT
- SWITCHBOARD
- FIRE BLANKET
- MANUAL CALL POINT